



VOCO[®]

AN IHG HOTEL

Brisbane City Centre

**HOTEL
INDIGO**[®]

AN IHG HOTEL

BRISBANE CITY CENTRE



Meetings and Events

Tailored Spaces for Your Every Need

Welcome to voco and Hotel Indigo Brisbane City Centre, a premium integrated events and meetings precinct. With our extensive offering of 16 versatile conference spaces along with 406 rooms across two hotels, we cater to gatherings of all sizes, accommodating intimate meetings to grand-scale events hosting up to 800 attendees.

Our state-of-the-art facilities are equipped with cutting-edge audiovisual technology and offer customizable setups to meet your specific requirements. Whether you're planning a small team brainstorming session, a product launch, or a large-scale conference, trade show, our experienced events team and dedicated staff ensure a seamless and successful event. Discover a world of possibilities where every occasion is a resounding success.

VOCO[®]

AN IHG HOTEL

Brisbane City Centre

**HOTEL
INDIGO**[®]

AN IHG HOTEL

BRISBANE CITY CENTRE





Refreshingly different

A BUZZING AND WELCOMING ATMOSPHERE

Brisbane's voco® City Centre seamlessly blends local charm with modern design. Located at North Quay, the hotel sparks curiosity, offering a unique stay. Explore Queen Street Mall for retail therapy, or nearby attractions like King George Square and South Bank's Art Precinct. With 194 premium rooms featuring plush bedding, vibrant art, and smart technology, voco® inspires every aspect of your stay. Enjoy a barista coffee, and relax in the rooftop pool,— voco® Brisbane City Centre is refreshingly distinct.

194 Rooms
16 Function Spaces
24hr Reception
Free WiFi
1 Food & Beverage Outlet
24hr Room Service
24hr Gym
Rooftop Pool





Approachably Boutique

DISCOVER, INDULGE AND IMAGINE

Explore Hotel Indigo Brisbane City Centre, your creatively curated retreat to discover, indulge, and imagine stories in our vibrant neighboUrhood. Wander, be immersed, and uncover hidden tales in the multifaceted Brisbane City Centre at North Quay. Ideal for local creatives, curious explorers, and discerning business travelers, our hotel provides easy access to central business hubs and abundant exploration opportunities.

212 Rooms
16 Function Spaces
24hr Reception
Free WiFi
2 Food & Beverage Outlets
24hr Room Service
Gym



Drink and Dine

zuma

Enjoy breakfast at Zuma's with river views and a fantastic buffet spread, kickstarting your day with barista-made coffee and delicious food. - add in details about live chef station. Sunset and dusk space - seasonal menu



Our speakeasy bar offering unique cocktails, Japanese whiskeys, sakes, and Japanese beers. Enjoy Australian and international wines by the glass, along with a menu of fresh, Izakaya-style small bites. Ideal for post-work, pre-dinner, celebrations, and private events.



Experience traditional and theatrical Japanese dining at Izakaya of Japan. Delight in small plates like zensai, sashimi, and more in a casual setting. Our menu offers appetisers, small plates, and signature large dishes. Large groups can enjoy our private dining space, The Veranda, with chic city views.



Choose Your Space

TAMBORINE

Tamborine can accommodate 12-18 people in a boardroom configuration or up to 30 in a theatre-style setup, making this conference room ideal for small board meetings or secretariats. Conveniently located on the ground floor adjoining a spacious pre-function area.

Size - 39m²
Boardroom - 18pax
U Shape - 15pax
Theatre - 30pax
Classroom - 18px
Cabaret - 24pax
Dining - 30pax
Cocktail - 30pax



LITTABELLA

Need an inspiring place to meet? Littabella is the perfect space for intimate meetings and gatherings. Fitted with state-of-the-art AV equipment including video conferencing. This room also comes with access to the communal meeting foyer featuring lounges, and office pods and is ideal for off-site meetings and workshops.

Size - 36m²
Boardroom - 12pax
U Shape - 15pax
Theatre - 30pax
Classroom - 18px
Cabaret - 24pax
Dining - 30pax
Cocktail - 30pax



THE VERANDA

A hidden spot to discover next to our Japanese whisky bar 1603 in the heart of Brisbane's CBD. Bathed in natural light and offering an exotic twist on food and drinks this space is ideal for long table dinners, cocktail events, parties of any type, or a thought-provoking meeting there is an enclave of spaces to escape the ordinary.

Size - 49m²
Boardroom - 15pax
U Shape - 18pax
Theatre - 30pax
Classroom - 25pax
Cabaret - 24pax
Dining - 30pax
Cocktail - 40pax



Choose Your Space

CLAREMONT

One of three meeting rooms located on level two, Claremont spans 80m² and caters to up to 80 people in a theatre style.

With its adjoining pre-function space bathing in natural light, guests can relax or mingle during breaks. Claremont is an ideal room for all-day events.

Size - 80m²

Boardroom - 30pax

U Shape - 27pax

Theatre - 80pax

Classroom - 36px

Cabaret - 48pax

Dining - 60pax

Cocktail - 55pax



MALENY

Maleny's 92m² can accommodate 27 in a U-shape, 30 in a boardroom or 80 in a theatre style. Guests will appreciate the room's pre- and post-function space, where vibrant modern art creates a refreshing and inspiring environment in which to take a break.

Size - 92m²

Boardroom - 30pax

U Shape - 27pax

Theatre - 80pax

Classroom - 54pax

Cabaret - 48pax

Dining - 60pax

Cocktail - 75pax



THE PALMS

The Palms is the largest meeting room on the second floor, spanning 111m². The Palms is a versatile room that can also be made even larger – 287m² – thanks to adjustable walls that open up to include adjoining rooms Claremont and Maleny.

Size - 111m²

Boardroom - 30pax

U Shape - 33pax

Theatre - 120pax

Classroom - 60pax

Cabaret - 64pax

Dining - 90pax

Cocktail - 100pax





The Grand Palms

Located on Level 2 of the voco Hotel Brisbane, The Grand Palms function space has the benefit of exclusive space for you and your guests.

Featuring a beautiful pre-function space flooded with natural light it is the ideal space to meet and mingle before entering your private function room equipped to cater to all modern audio-visual needs.

Size - 283m²

Boardroom - 96pax

U Shape - 87pax

Theatre - 290pax

Classroom - 180pax

Cabaret - 168pax

Dining - 210pax

Cocktail - 225pax

Choose Your Space

LEGENDS

Explore a hidden gem beside Voco Brisbane Lobby in the heart of Brisbane's CBD. With natural light and an exotic flair in food and drinks, it's perfect for long table dinners, cocktail events, various parties, or insightful meetings. Find a range of spaces to escape the ordinary.

Size - 135m²
Boardroom - 30pax
U Shape - 15pax
Theatre - 50pax
Classroom - 36pax
Cabaret - 32pax
Dining - 40pax
Cocktail - 85pax



ANSETT

On Level 1, this 119m² room offers great natural light and a peek at the Brisbane River. With its private lobby, it provides a small breakout area for meetings. Named the Ansett room, it pays homage to the golden era of Brisbane expansion from the 1950s.

Size - 119m²
Boardroom - 40pax
U Shape - 40pax
Theatre - 100pax
Classroom - 50pax
Cabaret - 64pax
Dining - 80pax
Cocktail - 100pax



ZUMA

Explore Zuma at voco Brisbane City Centre —an exquisite venue with stunning Brisbane River views, perfect for weddings, parties, and social events. Zuma features a private bar, lounge area, and panoramic river views towards Southbank. Experience comfort and style in a 260m² space, catering to events with capacities from 50 to 160 guests.

Size - 260m²
Cabaret - 64pax
Dining - 80pax
Cocktail - 160pax





Chelsea Lane

Based in Brisbane's City Centre this unique function space makes the most of the amazing Queensland climate. You and your guests can enjoy the outside while still protected by our operable roof. The dazzling Chelsea Lane lights create an engaging function experience for your cocktail, long table, product lunch, or any gathering/event.

Events in Chelsea Lane



Size - 246m²
Boardroom - 60pax
Theatre - 200pax
Cabaret - 80pax
Dining - 100pax
Cocktail - 200pax

Choose Your Space

SUNDOWN & PIPER

Sundown & Piper spans 93m² and can cater to groups as small as 27 or as large as 90. Located on the mezzanine and showcases a warm, neutral palette with plenty of voco™ personality thrown in in pops of navy and yellow.

Size - 93m² & 75m²
Boardroom - 30pax
U Shape - 27pax
Theatre - 90pax
Classroom - 42pax
Cabaret - 32px
Dining - 40pax
Cocktail - 90pax



TOPAZ

Topaz boasts sky-high, 3.5m² ceilings and 156m² proportions that can accommodate 60 people in a classroom, 90 in a cabaret and 120 in a theatre style setup. A nearby pre-function area with bespoke painted wall murals and framed prints is also on offer.

Size - 156m²
Boardroom - 30pax
U Shape - 33pax
Theatre - 120pax
Classroom - 60pax
Cabaret - 64px
Dining - 80pax
Cocktail - 120pax



DAINTREE

Need a big space for your meeting, event, trade show or gala, then Daintree is the perfect space for you. Located in the voco Hotel Brisbane, Daintree function room has a large floor space with high set ceilings and a beautiful pre-function foyer. Equipped with all the modern audio-visual faculties Daintree is set up ready to make your function or event a success.

Size - 322m²
Boardroom - 68pax
U Shape - 72pax
Theatre - 350pax
Classroom - 180pax
Cabaret - 128px
Dining - 160pax
Cocktail - 320pax





The Grand Chelsea Ballroom

It doesn't get more convenient than voco Brisbane City Centre for your next conference, meeting or event. voco Brisbane City is positioned on the banks of the Brisbane River in up-and-coming North Quay, your guests will love being just a stone's throw from some of the sun-drenched capital's best shopping and most popular sporting and entertainment venues.

Known around town as the go-to venue for the largest Brisbane events, the Grand Chelsea wows with its palatial 648m² of space. It can accommodate 700 in a theatre-style thanks to its clever combination of Sundown, Piper, Topaz and Daintree rooms.

Events in Grand Chelsea Ballroom



Size - 648m²
Boardroom - 70pax
U Shape - 70pax
Theatre - 700pax
Classroom - 324pax
Cabaret - 360pax
Dining - 450pax
Cocktail - 500pax

Capacities & Dimensions

| Level/Floor | Area / Room | Area Sq.M. | L x W x H | Banquet | Banquet Including AV & Dancefloor | Cabaret | Classroom | Theatre | U-Shape | Board Room | Cocktail |
|--------------|------------------------|------------|----------------|---------|-----------------------------------|---------|-----------|---------|---------|------------|----------|
| Ground Floor | Tamborine | 39 | 7 x 8 x 2.4 | 30 | - | 24 | 27 | 40 | 15 | 18 | 30 |
| | Littabella | 36 | 7 x 5 x 2.4 | 30 | - | 24 | 27 | 40 | 15 | 12 | 30 |
| | Ground Pre Funtion | 75 | 7.5 x 10 x 2.4 | | | | | | | | 50 |
| Mezzanine | Legends | 135 | 22 x 9 x 3 | 60 | | 48 | 36 | 50 | 15 | 30 | 85 |
| | Sundown | 94 | 12 x 8 x 3.5 | 50 | | 40 | 42 | 90 | 27 | 30 | 90 |
| | Piper | 75 | 12 x 6 x 3.5 | 40 | | 32 | 42 | 90 | 27 | 30 | 80 |
| | Topaz | 156 | 12 x 12 x 3.5 | 80 | | 64 | 60 | 120 | 33 | 30 | 120 |
| | Daintree | 322 | 12 x 27 x 3.5 | 200 | | 160 | 180 | 350 | 72 | 68 | 300 |
| | Sundown & Piper | 168 | 12 x 14 x 3.5 | 120 | | 80 | 84 | 180 | 54 | - | 150 |
| | Piper & Topaz | 231 | 12 x 18 x 3.5 | 150 | | 112 | 102 | 210 | 60 | 60 | 190 |
| | Sundown, Piper & Topaz | 325 | 12 x 26 x 3.5 | 200 | | 160 | 144 | 300 | 86 | 90 | 260 |
| | Grand Chelsea Ballroom | 648 | 24 x 27 x 3.5 | 500 | 450 | 360 | 324 | 700 | 70 | 70 | 500 |
| | Chelsea Lane | 246 | 35 x 6 x 9 | 100 | 70 | 80 | | 150 | | 60 | 200 |
| | Chelsea Pre Funtion | 240 | 30 x 8 x 6 | 80 | | 64 | - | - | - | - | 200 |
| | Full Chelsea Area | 1134 | | 570 | | 456 | - | - | - | - | 800 |

Capacities & Dimensions

| | | | | | | | | | | | |
|--------------|----------------------|-----|-----------------|-----|-----|-----|-----|-----|----|----|-----|
| Level 1 | Ansett Room | 119 | 17 x 7 x 3 | 80 | | 64 | 50 | 100 | 40 | 40 | 100 |
| Level 2 | Zuma | 260 | 37 x 7 x 3 | 80 | | 64 | - | - | - | - | 160 |
| | Claremont | 80 | 13 x 6 x 3 | 50 | | 40 | 36 | 80 | 27 | 30 | 60 |
| | Maleny | 92 | 13 x 7 x 3 | 60 | | 48 | 54 | 80 | 33 | 30 | 75 |
| | The Palms | 111 | 17 x 7 x 3 | 80 | | 64 | 60 | 100 | 33 | 42 | 100 |
| | Claremont & Maleny | 172 | 14 x 13 x 3 | 120 | | 96 | 102 | 170 | 54 | 60 | 125 |
| | Maleny & The Palms | 203 | 17 x 14 x 3 | 150 | 70 | 120 | 132 | 210 | 60 | 66 | 170 |
| | The Grand Palms | 283 | 17 x 20 x 3 | 200 | 150 | 160 | 180 | 290 | 87 | 96 | 225 |
| | Level 2 Pre Function | 185 | 14 x 13 x 3 | - | | - | - | - | - | - | 160 |
| | Full Palms Function | 468 | | - | | - | - | - | - | - | 385 |
| Hotel Indigo | Veranda | 55 | 8 x 7 x 2.4 | 40 | | - | 25 | 30 | 18 | 15 | 40 |
| | Bar 1603 | 150 | 21 x 7 x 2.4 | | | | | | | | 60 |
| | Izakaya Publico | 180 | 21 x 8 x 9 | 108 | | | | | | | 180 |

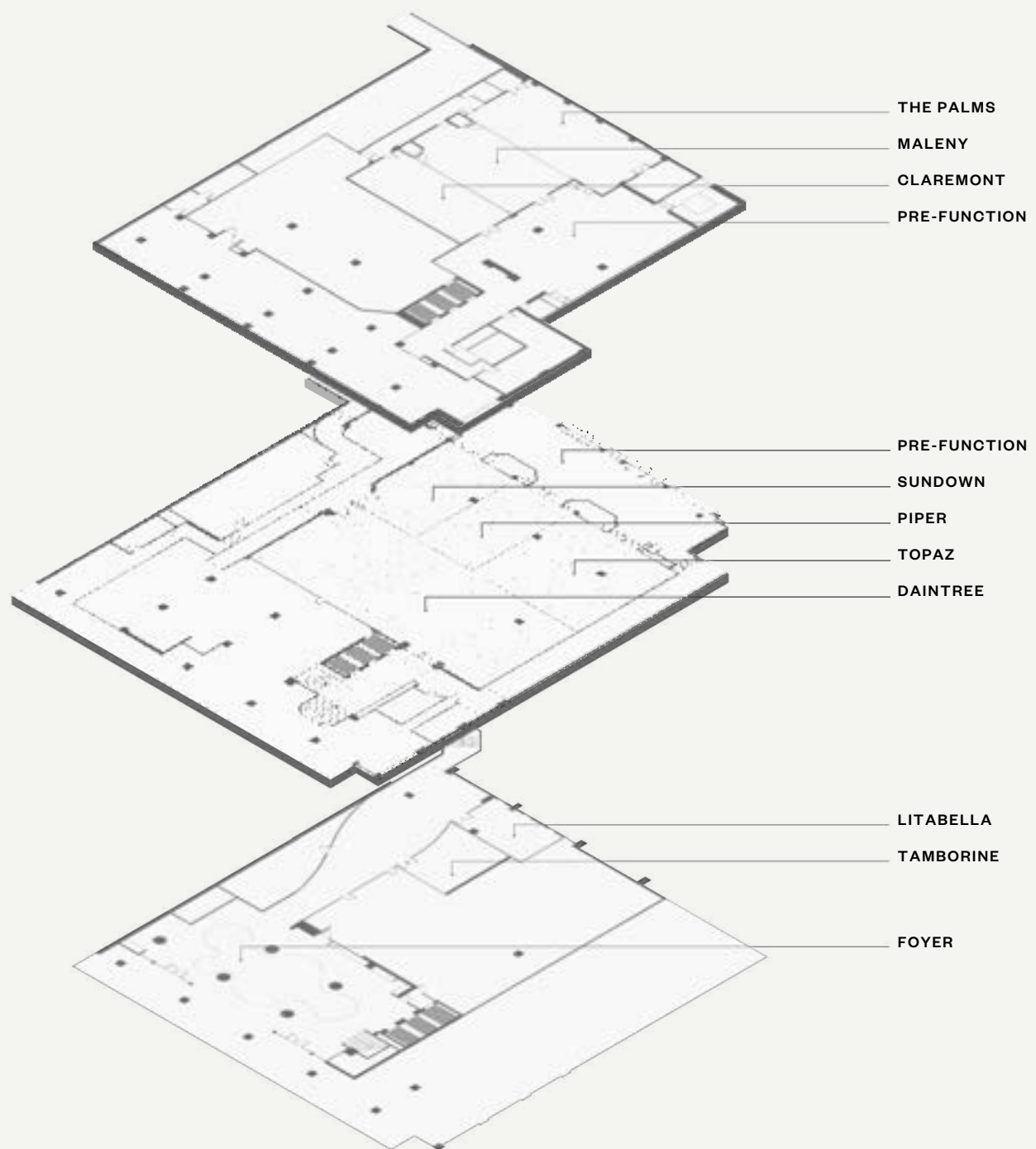
LEVEL 2



MEZZANINE



GROUND FLOOR



[360 Virtual Tour](#)
[Click Here](#)

Conference Packages

HALF DAY

**FROM \$75pp
(MINIMUM 20 DELEGATES)**

Arrival tea and coffee with whole fruit.

Morning/Afternoon tea including brewed coffee and tea, with two break food items.

Working lunch including brewed coffee and tea, and a selection of sandwiches, wraps, salads, fruit and dessert

Still water.



FULL DAY

**FROM \$80pp
(MINIMUM 20 DELEGATES)**

Arrival tea and coffee with whole fruit.

Morning tea including brewed coffee and tea, with two break food items.

Working lunch including brewed coffee and tea, and a selection of sandwiches, wraps, salads, fruit, dessert.

Afternoon tea including brewed coffee and tea, with two break food items.

Still water.



voco EXTRAS

**AVAILABLE AS ADD-ONS TO ANY
CONFERENCE PACKAGE**

1 Hot Dish to your working lunch \$10pp

Full Hot Buffet Lunch \$10pp

Extra Morning Tea or Afternoon Tea item \$9pp

Energy Station \$8.50pp

Izakaya Bento Box \$20pp

(maximum 20 guests)

Barista Coffee Cart

Full day hire catering breaks only \$1000

Full day hire (8 hours) \$1200

**All Day Delegate Packages come with
complimentary Wifi, Notepads, Pens,
Snack Station and Registration Desk**





Small Meeting Options

VOCO WORKING LUNCH FROM \$45pp (MINIMUM 10 DELEGATES)

Selection of sandwiches and wraps
with seasonal salads and fruits.

VOCO EXTRA WORKING LUNCH FROM \$55pp (MINIMUM 10 DELEGATES)

Selection of sandwiches and wraps,
seasonal salads, 1 hot dish and fruits



BREAK ITEMS

1 item with Tea & coffee \$13pp
2 items with Tea & coffee \$22pp

BREAKFAST OPTIONS (MINIMUM 20 DELEGATES)

Standing breakfast from \$25pp

Continental breakfast from \$30pp

Buffet breakfast from \$45pp

Chef's plated breakfast from \$40pp



Breakfast Set Menu

**JOIN US FOR BREAKFAST
ON THE VERANDA**

**BOARDROOM BREAKFAST MEETING
\$45PP
(MAXIMUM 18PAX)**

Espresso Coffee
Fresh sliced fruit
Hot plated Breakfast single drop
Chilled Juices

Jumpstart your day with our exclusive breakfast meeting at The Veranda, our private meeting room. With cutting-edge AV conferencing, it's perfect for efficient and impactful gatherings. Our 2-hour breakfast meeting offer blends a curated breakfast with a conducive environment for easy collaboration and decision-making. Fuel your discussions with a delicious breakfast, and let The Veranda set the stage for a successful, time-efficient meeting. Seize the day with our quick and convenient breakfast meeting package – where efficiency meets excellence.

Trade Shows



With two dedicated function levels, the largest catering for up to 72 trade displays, our venue provide the ideal space to showcase your ideal venue for your next Trade Show event!

Elevate your exhibit by showcasing cars inside the ballroom, adding a touch of luxury to your presentation. Tailor your booth with options for powered or non-powered setups, accommodating diverse display needs.



| Level/Floor | Area / Room | Area Sq.M. | L x W x H Meters | Trade Booths (3x2) |
|-------------|------------------------|------------|------------------|--------------------|
| Mezzanine | Legends | 135 | 22x 9 x 3 | 6 |
| | Sundown | 94 | 12 x 8 x 6 | 8 |
| | Piper | 75 | 12 x 6 x 6 | 8 |
| | Topaz | 156 | 12 x 12 x 6 | 10 |
| | Daintree | 322 | 12 x 27 x 6 | 21 |
| | Grand Chelsea Ballroom | 648 | 24 x 27 x 6 | 48 |
| | Chelsea Lane | 246 | 35 x 6 x 9 | 12 |
| | Chelsea Pre Function | 240 | 30 x 8 x 6 | 7 |
| | Full Chelsea Area | 1134 | | 72 |
| Level 2 | The Grand Palms | 283 | 17 x 20 x 3 | 18 |
| | Level 2 Pre Function | 185 | 14 x 13 x 3 | 10 |
| | Full Palms Function | 471 | | 28 |



Cocktail Packages

Elevate your cocktail event with delectable canapés, sumptuous platters, live stations and optional Grazing Tables for added elegance. Let our packages transform your gathering into an unforgettable experience, where every bite leaves a lasting impression.

1 HOUR PACKAGE - \$60pp

(Minimum 30 guests)

2 Hot and 2 Cold Canapes

1 Hour beverage package

2 HOUR PACKAGE - \$85pp

(Minimum 30 guests)

4 Hot and 3 Cold Canapes

2 Hour beverage package

3 HOUR PACKAGE - \$100pp

(Minimum 30 guests)

2 Hot and 2 Cold Canapes

+ 2 Substantial Bowls

3 Hour beverage package

ALL PACKAGES INCLUDE:

scattered seating

cocktail rounds

dance floor

stage





Pimp Your Package

PLATTERS

Serves 10 guests

Asian - \$300 per platter
Mezza - \$300 per platter
Cheese - \$350 per platter
Dessert - \$350 per platter

CANAPES

Minimum of 30 guests

2 Hot and 2 Cold Canapes \$28pp
4 Hot and 3 Cold Canapes \$40pp
6 Hot and 4 Cold Canapes \$55pp

LIVE STATIONS

Minimum of 50 Guests
(\$500 set up fee per station)
Oyster Station - \$60pp
Kushyaki station - \$39pp
Laksa station - \$35pp
Pop-corn station - \$35pp
Paella station - \$29pp

GRAZING TABLES

Minimum of 40 Guests
\$30pp

Indulge in a feast for the senses with our exquisite Grazing Tables. Elevate your event with an array of delectable treats, artfully presented to delight your guests and create a stunning focal point

SMALL BOWLS

Minimum of 30 guests

Seafood hokkein noodle box - \$12pp
Fish & chips - \$12pp
Thai green vegetable curry - \$10pp
Loaded fries - \$10pp
Burrito bowl - \$14pp
Middle Eastern falafel - \$11pp
Buffalo wings - \$11pp
Pork bao bun - \$10pp

BEVERAGES

Prosecco Bar \$25pp
(Minimum 30 guests)
Additional 1 hour beverages \$7pp
Welcome Cocktail \$18pp





Gala Packages

Transform your gala or event at voco Brisbane City Centre's Grand Chelsea Ballroom. This exquisite venue is the perfect canvas for unforgettable memories, featuring impeccable amenities and service. Make your 2024 occasion truly stand out with a night of elegance, excitement, and lasting impressions.

PACKAGE OPTIONS:

Plated alternate drop:

2 Course \$115pp

3 Course \$135pp

2 COURSES:

Entree & Main OR Main & Dessert served alternate drop

3 hour voco beverage package

Glass vase centerpieces

2 Personalised Menus per table

Dancefloor

Stage

White or Black Table Cloth and Napkin

3 COURSES:

Entree, Main and Dessert served alternate drop

4 hour voco beverage package

Glass vase centerpieces

2 Personalised Menus per table

Dancefloor

Stage

White or Black Table Cloth and Napkin



School Formal Package

Our exquisite Grand Chelsea Ballroom is the ideal canvas for unforgettable memories, offering top-notch amenities and impeccable service. Make your 2024 school formal truly standout

PACKAGE OPTIONS: (Minimum of 50 guests)

Cocktail \$89pp

2 Course \$99pp

3 Course \$110pp

ALL OPTIONS INCLUDE:

3 hour soft drink package
Glass vase centerpieces
Dancefloor
Stage
Lectern and microphone
White or Black Table Cloth and
Napkin

ADD-ONS:

Arrival canapes (1H and 1C) - \$12pp
Additional 1 Hour Soft Drinks - \$5pp
4-hour DJ - From \$600
Chair Cover and Sash - \$8.50pp
Tiffany Chairs - \$10pp
Floral Centrepieces -\$5pp
(\$50/table)

voco Beverage Packages

OWL PACKAGE

Chain of Fire Brut Cuvee
Chain of Fire Sauv Blanc
Chain of Fire Shiraz Cab
Great Northern Super Crisp
Peroni Nastro Azzurro
Cascade Premium Light

1 hour \$25pp
2 hour \$32pp
3 hour \$39pp
4 hour \$46pp
5 hour \$53pp



FINCH PACKAGE

Choice of 2 reds and 2 whites/rose

Veuve Tailhan Blanc DeBlanc Brut
Hintons Hundred Sauv Blanc
Quilty & Gransden Chardonnay
Quilty & Gransden Rose
Quilty & Gransden Merlot
Hintons Hundred Shiraz
Hintons Hundred Cab Sauv
Fiore Moscato
Peroni Nastro Azzurro
Asahi Superdry
Cascade Premium Light

1 hour \$32pp
2 hour \$39pp
3 hour \$46pp
4 hour \$53pp
5 hours \$60pp



FLAMINGO PACKAGE

Choice of 2 reds and 2 whites / rose

Josef Chromy Spk NV
Wicks Estate Sauv Blanc
Wicks Estate Pinot Grigio
Wicks Estate Chardonnay
Wicks Estate Pinot Noir
Wicks Estate Shiraz
Wicks Estate Cab Sauv
Fiore Moscato
Peroni Nastro Azzurro
Asahi Superdry
Cascade Premium Light

1 hour \$37pp
2 hour \$44pp
3 hour \$51pp
4 hour \$58pp
5 hour \$65pp



voco Beverage Pricelist

Sparkling Wines

| | GLS | BTL |
|--|---------|----------|
| Chain of Fire Brut Cuvee | \$10.00 | \$42.00 |
| Veuve Tailhan BDB Brut | \$12.00 | \$52.00 |
| Taltarni Victorian Brut Cuvee Victoria | | \$76.00 |
| Il Fiore Prosecco DOC Veneto | | \$76.00 |
| Josef Chromy Spk NV Tasmanian | | \$120.00 |

White Wines

| | GLS | BTL |
|--|---------|---------|
| Chain of Fire SauvBlancSem | \$10.00 | \$42.00 |
| Chain of Fire Chardonnay | \$10.00 | \$42.00 |
| Chain of Fire Pinot Grigio | \$10.00 | \$42.00 |
| Hintons Hundred Sauv Blanc Coonawarra | \$12.00 | \$48.00 |
| Quilty & Gransden Chard Central Ranges | \$12.00 | \$48.00 |
| Quilty & Gransden Rose Orange | \$12.00 | \$48.00 |
| Wicks Estate Sauv Blanc Adelaide Hills | | \$65.00 |
| Wicks Estate Pinot Grigio Adelaide Hills | | \$65.00 |
| Wicks Estate Chardonnay Adelaide Hills | | \$65.00 |
| Ara Sauv Blanc Marlborough | | \$68.00 |
| Young Poets Moscato | \$10.00 | \$45.00 |
| Fiore Moscato | \$13.00 | \$55.00 |

Red Wines

| | GLS | BTL |
|---|---------|---------|
| Chain of Fire Shiraz Cab | \$10.00 | \$42.00 |
| Chain of Fire Merlot | \$10.00 | \$42.00 |
| Chain of Fire Pinot Noir | \$10.00 | \$42.00 |
| Quilty & Gransden Merlot Central Ranges | \$12.00 | \$48.00 |
| Hintons Hundred Shiraz Coonawarra | \$12.00 | \$48.00 |
| Hintons Hundred Cab Sauv Coonawarra | \$12.00 | \$48.00 |
| Wicks Estate Pinot Noir Adelaide Hills | | \$72.00 |
| Wicks Estate Shiraz Adelaide Hills | | \$72.00 |
| Wicks Estate Cab Sauv Adelaide Hills | | \$72.00 |

BEERS

| | BTL |
|-------------------------------|---------|
| Asahi Zero 0.0% | \$8.00 |
| Cascade Premium Light | \$9.00 |
| Peroni Nastro Azzuro 3.5% Mid | \$9.50 |
| Asahi Superdry 3.5% Mid | \$9.50 |
| Great Northern Super Crisp | \$10.00 |
| 4 Pines Pacific Ale | \$11.00 |
| Asahi Superdry | \$11.00 |
| Peroni Nastro Azzurro | \$11.00 |
| Crown Lager | \$10.00 |
| Corona | \$12.00 |
| 4 Pines Pale Ale | \$11.00 |
| Pure Blonde | \$10.00 |



SET MENUS

Minimum of 6 Guests

KAISEKI - GROUP SET

\$65pp

Rice
Sashimi Moriawase (gf)
Edamame (v)
Sticky Teba Shio
Tokyo Street Fries
Salmon Tare (gf/df)
Kyabetsu Salado (v)

KAISEKI - PREMIUM SET

\$90pp

Tataki Kingfish (gf)
Miso Soup (v)
Pork Gyoza (df)
Chicken Yakitori (v/df)
Soy Yakisoba (v)
Beef Cheek Matcha Tacos
Edamame Fried Rice (gf) Broccolini
Gomaae (v)
Madai | Snapper (gf)

ZEN FEAST BUFFET

\$155pp

SALADS & SOUP

Jagaimo | Negi Salad
Wakame Salad (gf/df/vgn)
Teriyaki Chicken | Carrot & Giner Salad (df/gf)

SEAFOOD COLD SELECTION

Natural Oysters | Citrus (gf/df)
Prawns | Sakura Sauce
Smoked Salmon & Avocado Mousse | Crostini

HOT DISHES

Tonkatsu Roasted Beef | Miso Mustard Sauce (gf)
Tofu | Vegetable Katsu (vgn)
Edamame Fried Rice (gf/df)
Miso Mustard Chicken Maryland (gf)
Robata Grilled Butta Barra | Yuzo Miso (gf)
Roasted Jagaimo Potato | Brown Butter (gf)
Broccolini | Black Sesame Sauce (v/gf)

DESSERTS

Green Tea Matcha Sponge Cake
Mango Yuzu Cheesecake
Miso Chocolate Brownie
Yuzu Caramel Tart

OTSUMAMI

Minimum 15 Guests
(CANAPES)

1 Hour

3 warm & 3 chilled canapes -
\$45pp

1.5 Hour

4 warm, 3 chilled & 1 Substantial -
\$55pp

2 Hour

4 warm, 4 chilled & 2 Substantial -
\$75pp

Swap out any chilled or warm for a
sweet treat

Add a substantial canape for
\$12 per person

PLATTERS PACKAGES

SUSHI PLATTER

\$145

(10 Pieces Of Each Item)

Tempura Ebi Sushi Roll
Katsu Chicken I Avocado Sushi Roll (df)
Teriyaki Salmon I Cucumber Roll (gf)
Avocado I Camembert Cheese Roll (gf)
Yasai Tempura Roll (gf/vgn)

SLIDERS

\$125

(20 Pieces)

Wagyu Beef Slider Burger |
Miso Mustard Sauce | Sesame Slaw

AGEMONO PLATTER

\$165

(10 Pieces Each Item)

Teba Shio Wings
Yasai Tempura (v)
Tempura Prawns
Ahiru/Duck Spring Roll
Katsu Tofu (v)

Bao

\$105

(20 pieces)

Chicken Teriayki Bao | Pickled Wombok |
Cucumber





Izakaya Beverage Packages

IZAKAYA PACKAGE

1 Hours \$32 | 2 Hours \$50
3 Hours \$60 | 4 Hours \$60

ZEN PACKAGE

2 Hours \$50 | 3 Hours \$60
4 Hours \$70 inc.
Cocktail on arrival
OR Sake on arrival

GEISHA PACKAGE

2 Hours \$65 | 3 Hours \$75
4 hours \$85 inc.
Cocktail on arrival
OR Sake on arrival



Our Preferred AV Partner

Our AV partner at voco and Hotel Indigo Brisbane is Select AV - Audio Visual Live Production for a reason. We invest heavily in premium equipment, encased in custom flight cases for durability. With over fifty years of combined event experience, our ongoing investment in top-notch technology ensures flawless delivery for our partners. Trust us with your event – we settle for nothing less than the best.





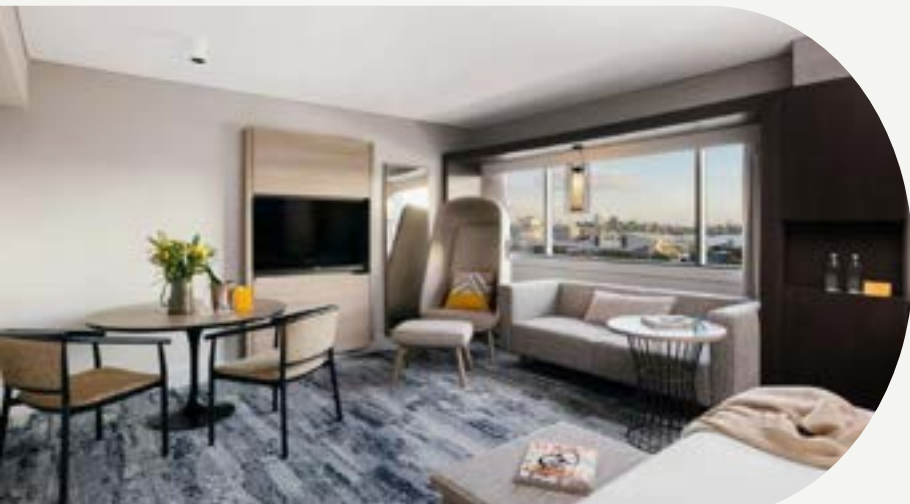
voco Brisbane City Centre Accommodation

Experience a refreshing style of accommodation in Brisbane CBD at voco® Brisbane City Centre.

Nestled on North Quay along the Brisbane River, our premium rooms offer plush bedding, modern bathrooms, and stunning views of the city or river.

Enjoy easy access to meetings, shopping, and entertainment. Take a dip in the rooftop pool, and indulge in classic snacks, craft brews, and local wines at Zuma Restaurant.

Immerse yourself in the charm of Queensland with our meticulously designed rooms and elevated amenities at voco® Brisbane City Centre.





Hotel Indigo Accommodation



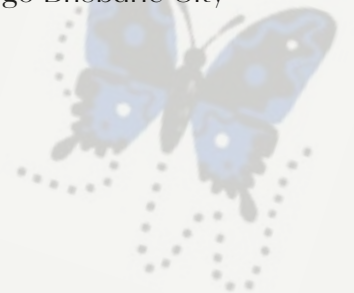
Hotel Indigo Brisbane City Centre is a creatively curated retreat at North Quay, inviting guests to explore the multifaceted Brisbane City Centre.

Conveniently located near business hubs, the hotel offers easy access for both business and leisure travelers. Inspired by Brisbane CBD's transformative stories and artistic flair, the hotel features hand-painted artworks, sculptures, and installations that reflect the city's bold beginnings.

The 212 guest rooms are strikingly designed, prompting guests to uncover hidden Brisbane stories. Izakaya Publico, our on-site restaurant, offers a delicious Japanese dining experience with locally sourced seasonal produce.



For those seeking entertainment, celebrate at 1603, a contemporary speakeasy-inspired bar serving local beer, wine, and signature sake cocktails. Explore, indulge, and imagine at Hotel Indigo Brisbane City Centre.





Brands built on sustainability

voco Hotel and Hotel Indigo Brisbane exemplify their commitment to sustainability by implementing rigorous measures to reduce energy consumption.



Adopting large-format bathroom amenities reduces plastic waste.



Filtered water in meeting areas and guest room water in glass bottles means 300+ plastic bottles foregone in every guest room each year.



Using biodegradable take-away coffee cups, instead of traditional alternatives, reduces our impact on the environment.



The filling of our indulgent bedding is made from 100% recycled materials.*



Aerated shower heads, reducing water usage and ensures lower energy consumption for water heating.



"Green ingredients" in bathroom amenities, obtained from sustainable or renewable plant-based origins, where its sourcing does not negatively impact the ecosystems.

***Estimated equivalent saving/reduction of 150 plastic bottles recycled per voco™ guest room, based on medium weight king duvet and four pillows per room**



Well deserved IHG® Rewards

Now you can get even more from booking with us. When you make bookings on behalf of others, we're here to reward you.

CHEERS TO THE NEW TIERS

Our redesigned tiers and earning structure are now live so you can earn more points and have more ways to use them than ever before.

New tiers = more rewards.

| | Nights Qualification | Points Qualification | Bonus Points |
|----------------|----------------------|----------------------|--------------|
| Club | 0 | 0 | N/A |
| Silver Elite | 10 | N/A | 20% |
| Gold Elite | 20 | 40K | 40% |
| Platinum Elite | 40 | 80K | 60% |
| Diamond Elite | 70 | 120K | 100% |

THE CHOICE IS YOURS



BONUS POINTS



CONTINUING SUITE UPGRADES



FOOD & BEVERAGE REWARDS



ANNUAL LOUNGE MEMBERSHIP

MILESTONE REWARDS

With the all-new Milestone Rewards, patience doesn't have to be your virtue. Choose something cool every 10 nights, starting at 20 nights.

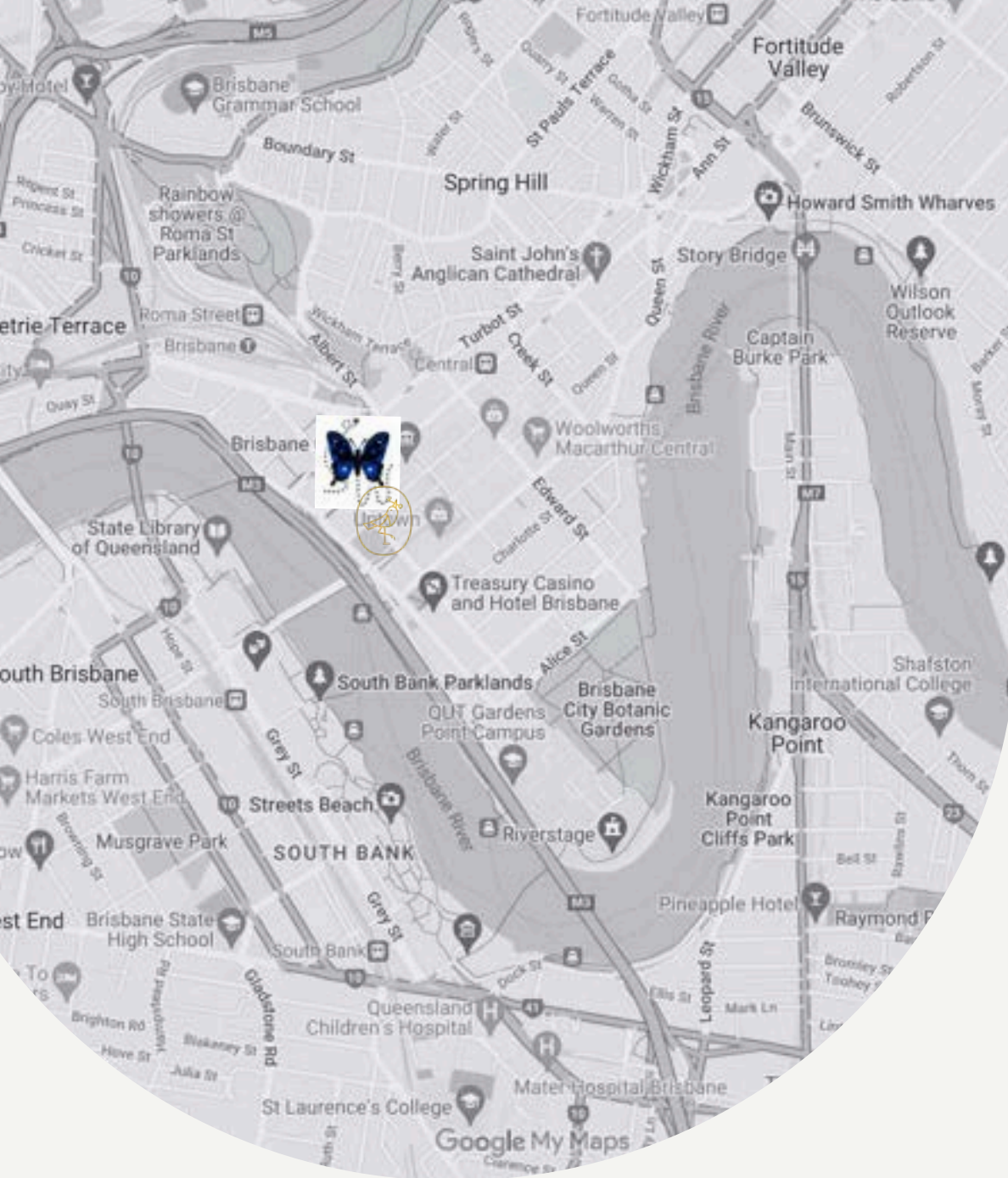
USE POINTS YOUR WAY

KEEP THE REWARDS COMING

With 6,000 destinations across 17 brands, you'll pile up the points — and have the freedom to decide how to use them. Choose from:

- ✓ REWARD NIGHTS
- ✓ SHOPPING THE CATALOG
- ✓ POINTS & CASH
- ✓ POINTS DONATION
- ✓ DIGITAL REWARDS
- ✓ AND MORE!

WWW.IHG.COM/BUSINESSREWARDS



Finding us

TRAVEL BY AIR

Brisbane Airport – 14km

TRAVEL BY RAIL


Central Station – 400m


South Brisbane Station – 850m

CONTACT US

voco® Brisbane City Centre
85-87 North Quay, Brisbane, QLD 4000
+61 7 3237 2324

events.bneqr@proinvesthotels.com

 @vocobrisbanecitycentre


 @vocobrisbanecitycentre

brisbanecitycentre.vocohotels.com

Hotel Indigo Brisbane
27/35 Turbot St, Brisbane City QLD
4000 +61 7 3237 2324

events.bneqr@proinvesthotels.com

 @hotelindigobrisbane

 @hotelindigobrisbane

www.ihg.com/hotelindigo/hotels/us/en/brisbane

VOCO®
AN IHG HOTEL

Brisbane City Centre

**HOTEL
INDIGO®**
AN IHG HOTEL
BRISBANE CITY CENTRE